



# ROSCOE RITE-NEB5

NEBULIZER COMPRESSOR

MODELS: RITE-NEB5  
RITE-NEB5-REUS  
RITE-NEB5-REUS-PB



Read this instruction manual carefully before use.  
Save these instructions for future reference.

**NEBULIZER COMPRESSOR**  
**MODEL: RITE-NEB5**  
**INSTRUCTIONS**

**INDEX**

1. Introduction .....	Page 1
2. Specifications .....	Page 3
3. Precautions and Warnings .....	Page 4
4. Product Identification .....	Page 10
5. Important Safeguards .....	Page 11
6. Operating Your Nebulizer .....	Page 12
7. Cleaning.....	Page 17

**1. INTRODUCTION**

Thank you for purchasing the RITE-NEB5 Nebulizer Compressor. It is a compact medical device designed to efficiently deliver physician prescribed medication to the bronchial lung passages. With proper care and use, it will provide you with many years of reliable treatment.

This product is developed for the successful treatment of asthma, allergies and other respiratory disorders. It creates a stream of air that travels through clear tube to the Air Compressor. When air enters the compressor, it will convert the prescribed medication into aerosol mist for easy inhalation.

Your nebulizer compressor should be used under the supervision of a licensed physician and/or a respiratory therapist. We encourage you to thoroughly read this guidebook to learn about the features of this product. Any use of this product other than its intended use should always be avoided.

## **INDICATIONS FOR USE:**

It is used to administer various aerosol treatments to adult and pediatric users (2 years and older) in the homecare space. Its use is indicated whenever a physician or healthcare professional administers or prescribes medical aerosol products to a patient using a Small Volume Nebulizer. The intended environment for use of the product is in the patient's home on the order of a physician.

The Disposable Nebulizer is used to administer various aerosol treatments to adult and pediatric patients in both the homecare and hospital settings. Its use is indicated whenever a physician or healthcare professional administers or prescribes medical aerosol products to a patient using a Small Volume Nebulizer.

The Reusable Jet Nebulizer is a handheld, pneumatic nebulizer designed to aerosolize prescription drugs for inhalation by a patient. Its use is indicated whenever a healthcare professional administers or prescribes medical aerosol products to a patient using a small volume nebulizer. The Reusable Jet Nebulizer is intended for use with pediatric (2 years and older) and as defined by the prescribed medication and adult patients in hospital/institutional settings, home care use, schools, and long term care facilities.



**WARNING (USA Only):** U.S.A. Federal Law restricts these devices to sale by, or on the order of, a physician or licensed practitioner. This device should be used only under the continued supervision of a physician or licensed practitioner.

THIS DEVICE IS INTENDED FOR SINGLE PATIENT USE.

**DANGER:** MEDICAL DEVICE IS NOT INTENDED TO BE USED AS A LIFE SUSTAINING/SUPPORTING DEVICE.

## 2. SPECIFICATIONS

Power	120V 60Hz
Power Consumption:	1.3A
Medication Capacity:	6ml
Particle Size:	Approx.(78.25±13.08)% within 0.5 to 5um range
MMAD:	2.52±0.89um
Average Atomizing Rate:	≥0.2ml/min
Noise Level:	Below 65dBA (DIN EN 13544-1)
Compressor Pressure Range:	30 ~ 50 Psi / 206Kpa ~ 345Kpa
Operation Pressure Range:	9.5 ~ 16 Psi / 65.5Kpa ~ 110Kpa
Liter Flow Range:	6 ~ 10 lpm
Operation Temperature Range:	10°C ~ 40°C (50°F ~ 104°F)
Operation Humidity Range:	10% ~ 95% RH
Storage Temperature Range:	-20°C ~ 70°C (-4°F ~ 158°F)
Storage Humidity Range:	10% ~ 95% RH
Atmospheric pressure	500 ~ 1060hPa
Dimension (L x W x H)	160 x 155 x 84mm (6.1" x 5.5" x 3.5")
Weight	1.2kg (2.7 Lbs)
Standard Accessories	Tubing, Nebulizer Cup, Tee, Mouthpiece, Corrugated Reservoir Tube

Protection against electric shock



- Class II Equipment



- Type BF applied parts:  
- Mouthpiece and mask

Protection against harmful ingress of water

-IP21: this device's grade of against ingress of solid foreign objects – ≥12.5mm diameter (and the against access to hazardous parts with finger); the grade of waterproof is protected against vertically falling water drops.

Degree of safety in the presence of flammable anesthetics or oxygen

-No AP/PG (Not suitable for use in the presence of flammable anesthetics or oxygen)

Mode of operation – 30 mins on 30 min off.

Conforms to ANSI/AAMI STD.ES60601-1, IEC STD.60601-1-6, IEC STD,60601-1-11.  
Certified to CAN/CSA STD. C22.2 NO.60601-1

### 3. PRECAUTIONS AND WARNINGS



#### **IFU CAUTIONS (to reduce risk of accident)**

It is important that you read **ALL** warnings in user manual before use. Use the product only for its intended use as described in the manual. Improper use can result in serious or fatal illness/injury, improper treatment, or property damage **DO NOT** attempt to operate this product without reading all instructions carefully. Save this manual for future reference.

This device has been thoroughly tested and inspected to assure proper performance and operation.

Specifications put forth in this manual were in effect at the time of publication. However, to ensure continual improvement measures, changes to these specifications may be made at any time without obligation on the part of manufacturer.

Upon receiving your nebulizer/compressor, inspect the packaging for signs of damage in transit. Inspect the unit thoroughly. If damage is noted, external or internal, **DO NOT** use, and report to your Homecare Dealer immediately.

When using electrical products, especially when children are present, basic safety precautions should always be followed. Read all instructions before using.

#### **OPERATING CAUTIONS:**

- Connect this product to an appropriate voltage outlet for your model. **DO NOT** use with power strips or extension cords.
- **DO NOT** use this product with a DC to AC converter, or with any AC voltage and/or frequency other than specified.
- **DO NOT** run this product unattended.

- The compressor motor has a thermal protector, which will shut off the unit before it becomes overheated. When the thermal protector shuts the unit off:
  - A. Switch off the unit
  - B. Unplug the unit from the electrical outlet.
  - C. Wait 30 Minutes for the motor to cool down before starting another treatment.
  - D. Make sure the air openings are not obstructed and air filter is clean.
  
- **NEVER** operate if this unit has a damaged cord or plug, if it has been dropped in any way or into water, if it does not work properly, discontinue use immediately until the unit has been examined and repaired.
  
- If any abnormality occurs, discontinue use immediately until the unit has been examined and repaired.
  
- **ALWAYS** unplug the product immediately after use.
  
- **NEVER** allow the power supply cord to be pulled, jerked, strained, twisted, or severely bent, especially at the plug connections. Damage will occur at the high flex point of entry into the appliance, causing it to rupture and short. Handle the cord carefully for longer life.
  
- **NEVER** block the air openings of the main unit or place it where the air openings may be obstructed.

#### **STORAGE CAUTIONS:**

- **DO NOT** store the unit under direct sunlight, high temperature, or humidity.
  
- Keep the unit out of reach of small children.
  
- Keep the cord away from heated surfaces. **DO NOT** wrap the cord around the appliance.
  
- **ALWAYS** keep the unit unplugged while not in use.

## CLEANING CAUTIONS:

- **DO NOT** immerse the unit in water. It may damage the unit.
- Disconnect the unit from the electrical outlet before cleaning.
- Clean all necessary parts after each use as instructed in this guidebook.
- Disposable nebulizers are **NOT** dishwasher safe
- Reusable Nebulizers are dishwasher safe.
- If you did not receive the components listed in this guidebook, please contact the dealer where you purchased your nebulizer.
- Tubing and accessories are **NOT** sterile from package. Prior to initial operation, the nebulizer should be thoroughly cleaned.
- **DO NOT** attempt to wash and reuse the air filter. **DO NOT** use substitute filter material. Compressor damage may result.
- The compressor is designed for intermittent use only. For optimal performance, operate the unit for 30 minutes on, then leave off for 30 minutes.
- The exterior surfaces of the unit and the air outlet connector may become slightly warm to the touch during use. Warm air can also be felt exiting the vents on the sides of the case of the unit. This is normal.
- Please dispose of this nebulizer in accordance with local, municipal, state, and federal law of electronic devices.



## IFU WARNINGS AND DANGERS:

**DANGER:** MEDICAL DEVICE IS NOT INTENDED TO BE USED AS A LIFE SUSTAINING/SUPPORTING DEVICE.



**WARNING:** Proper operation of this product is necessary to avoid physical harm. Improper use can cause personal injury and/or product damage. This product should not be used unless the operator has been instructed by a physician or other qualified health care professional.



**WARNING:** To reduce the risk of serious or fatal injury from electrocution:

- **DO NOT** place or store the product where it can fall or be knocked into a bathtub, sink, water, or other liquid.
- **DO NOT** place or drop into water or other liquid.
- **DO NOT** use while bathing.
- **DO NOT** reach for a product that has fallen into water or other liquid. Unplug immediately.
- **ALWAYS** unplug immediately after each use.



**WARNING:** IF ANY OF THE MOTOR HOUSING PARTS SHOULD BECOME DETACHED OR BROKEN, EXPOSING THE MOTOR OR ANY OTHER ELECTRICAL COMPONENTS, OPERATION SHOULD BE DISCONTINUED IMMEDIATELY TO AVOID PERSONAL INJURY OR FURTHER PRODUCT DAMAGE.

- To reduce the risk of serious or fatal injury from electrocution, fire, burns, and to reduce the risk of damage or malfunction of the unit:
  - Before use, check the serial number label on the bottom of the compressor to ensure that the voltage and current indicated on the unit correspond with the voltage and current available.
  - **NEVER** operate this product if it:
    - A. Has a damaged cord or plug
    - B. Is not working properly
    - C. Has been dropped or damaged
    - D. Has been exposed to any liquids inside the case
- Return non-operating product to an authorized dealer for repair or replacement.
- Keep all electrical cords away from heated surfaces. **DO NOT** overload wall outlets or use extension cords.
- **DO NOT** operate where oxygen is being administered in a closed environment such as an oxygen tent.
- **NEVER** drop or insert any object into any openings.



- **DO NOT** open or disassemble the compressor. Refer all servicing to an authorized dealer.
- **NEVER** spray liquids onto the compressor housing. Fluid could cause damage to the electrical and compressor parts, and could lead to a malfunction. In the event that fluids enter the unit, return the product to an authorized medical equipment center for examination and repair.
- **DO NOT** use the nebulizer while operating a vehicle.

#### **NEBULIZER AND ACCESSORIES:**

- Tubing and accessories are for single patient use only. **DO NOT** share your tubing and accessories with other patients.
- To reduce the risk of increased bacterial growth, infection, illness, or injury from contamination, thoroughly clean and dry all parts of tubing and accessories and thoroughly dry any moisture or condensation in the tubing at the end of every treatment, following instructions accordingly.
- Cleaning the nebulizer unit after each treatment is not enough. The tubing and accessories **MUST** also be regularly cleaned and disinfected between treatments to prevent serious or fatal illness caused by contamination.
- **NEVER** use tubing with a clogged nozzle. If the nozzle is clogged, the aerosol mist will be reduced, altered, or stopped, which will diminish or eliminate the effectiveness of the treatment. If clogging occurs, replace with the same model.
- Close supervision is necessary when this product is used by or near children and physically or mentally impaired persons. **NEVER** use when sleeping or drowsy.
- This product contains small parts that may present a choking hazard to small children. The tubing also presents a strangulation hazard.
- This device is **NOT** intended for use on children under the age of 2 years old.

- Before use, check tubing and accessories for proper assembly. All parts should be seated firmly in place. Use of improperly assembled tubing and accessories could diminish or prevent adequate delivery of medication and the effectiveness of the treatment.



**WARNING: ALWAYS** USE ADULT SUPERVISION WHEN ADMINISTERING TREATMENT TO A CHILD. **DO NOT** LEAVE A CHILD UNATTENDED DURING TREATMENT.



**WARNING:** Before connecting the power cord, make sure the I/O (ON/OFF) switch is in the O (OFF) position.



**WARNING:** Only one patient may use one set of tubing and accessories. **DO NOT** share components with other patients.

Safety overload: **DO NOT** exceed 30 minutes of continuous operation.

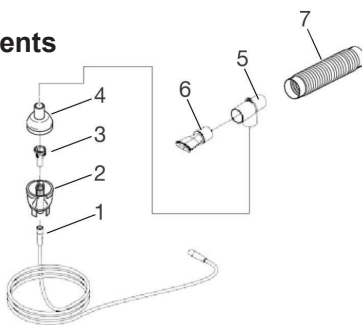
## 4. PRODUCT IDENTIFICATION

### Standard Compressor Accessories



### Standard Nebulizer Components (ADULT AND PEDIATRIC USE)

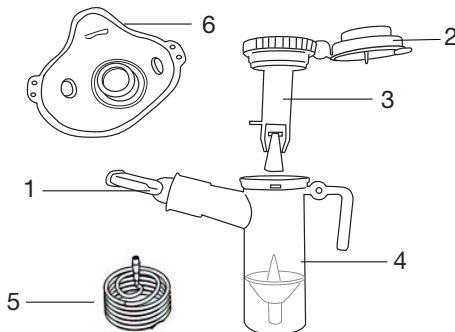
1. Connection Tubing
2. Nebulizer Cup
3. Nebulizer Insert
4. Nebulizer Cap
5. Tee
6. Mouthpiece
7. Corrugated Reservoir Tube



### Reusable Jet Nebulizer Components

(For ages 2 and above)  
(Included in RITE-NEB5-REUS,  
RITE-NEB5-REUSPM-PB only)


1. Mouthpiece
2. Cap with Valve
3. Nebulizer Insert
4. Nebulizer Cup
5. Connection Tubing
6. Aerosol Mask



## 5. IMPORTANT SAFEGUARDS

**Note:** Read all instructions carefully before use.

The following basic precautions are needed when using an electrical product:

 **CAUTION:** Failure to read and observe all precautions could result in personal injury or equipment damage.

### **Product Cautions:**

1. To avoid electrical shock: Keep the unit away from water • Do not immerse the power cord or the unit in liquid • Do not use while bathing • Do not reach for a unit that has fallen into water – immediately unplug the unit.
2. Never operate the unit if it has any damaged parts (including power cord).
3. The unit should not be used where flammable gas, oxygen or aerosol spray products are being used.
4. Disconnect the unit from the electrical outlet before cleaning, filling and after each use.
5. Do not use other attachments unless recommended by manufacturer.

### **Operating Cautions:**

1. Connect this product to an appropriate voltage outlet for your model.
2. Do not run this product unattended.
3. Never operate if this unit has a damaged cord or plug, if it has been dropped, or in any way, into water, if it does not work properly. Return it to a service center for repair.
4. If any abnormality occurs, discontinue use immediately until the unit has been examined and repaired.
5. Always unplug the product immediately after use.
6. Never block the air openings of the main unit or place it where the air openings may be obstructed.

### **Storage Cautions:**

1. Do not store the unit under direct sunlight, high temperature or humidity.
2. Keep the unit out of reach of kids.
3. Always keep the unit unplugged while not in use.

### **Cleaning Cautions:**

1. Do not immerse the compressor unit in water. It may damage the unit.
2. Disconnect the unit from the electrical outlet before cleaning.
3. Clean all necessary parts after each use as instructed in this guidebook.

## 6. OPERATING YOUR NEBULIZER

1. Check to ensure the following components of the nebulizer are enclosed:
  - Compressor unit
  - Tubing and accessories (see page 10 for illustration of parts)
2. It is recommended to keep extra tubing, accessories and air filters on hand at all times in case original parts become lost, damaged, or soiled.

 <b>CAUTION</b>
--

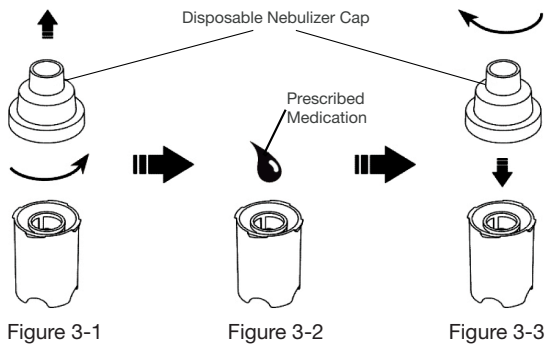
If you did not receive the components listed in this manual, please contact the dealer where you purchased your nebulizer.
--

## SETTING UP THE NEBULIZER COMPRESSOR AND NEBULIZER ACCESSORIES

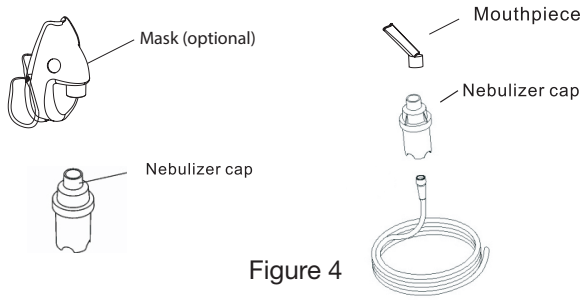
 <b>CAUTION</b>
--

Tubing and accessories are <b>NOT</b> sterile from package. Prior to initial operation, the nebulizer should be thoroughly cleaned. Refer to cleaning instructions on page 17.
--

1. Wash hands with soap and warm water and dry completely with a clean towel.
2. Place the compressor on a clean, dust-free, stable and flat surface. Check the filter monthly or every 10 – 12 treatments and replace if dirty, clogged, or wet to ensure proper operation.
3. Make sure tubing and accessories have been cleaned and/or disinfected before first use and after last daily treatment. Refer to the Cleaning and Disinfecting Tubing and Accessories section on page 17.
4. Remove the nebulizer cap by twisting counter-clockwise until it stops and lift up (Figure 3-1). Be sure that the cone is put inside the bottom section
5. Fill nebulizer cup with medication from unit dose vial, eye dropper, or syringe. Do not fill more than 5 ml per treatment (Figure 3-2).
6. Close the nebulizer cap and turn clockwise until it is tightened (Figure 3-3).



7. If using the mask (optional), press it directly into the nebulizer cap (Figure 4). If using the mouthpiece, attach it firmly into the nebulizer cap. The cap is designed to fit tightly (Figure 4).



8. If using reusable jet nebulizer reference Figure 5 for instructions.

**Directions For Use:**

1. Wash hands with soap and warm water.
2. Remove the nebulizer cup cap by twisting counter-clockwise until it stops (Fig 1). Lift up on the cap.
3. Fill nebulizer cup with prescribed medication (Fig 2). **DO NOT** fill more than 8ml/treatment.
4. Place the cap back into the container with the medication and turn clockwise until it is locked into place (Fig 3). Attach mouthpiece to component marked "1".
5. Connect tubing to circular port at the bottom of the cup marked "2".

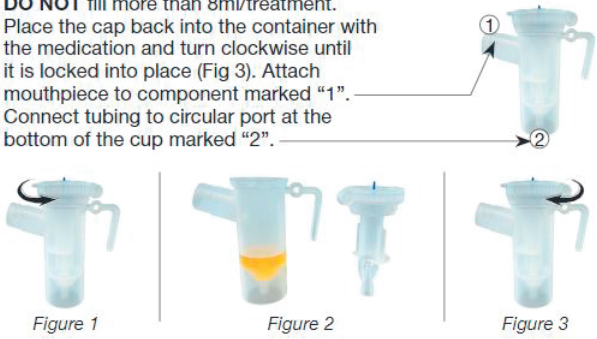


Figure 5

9. Attach one end of the tubing firmly onto to the air outlet on the back of the compressor unit. It is important that the tubing be pushed all the way onto the air outlet. The tubing is designed to fit tightly (Figure 6-1).
10. Firmly press the other end of the tubing onto the bottom of the nebulizer cup (Figure 6-2).

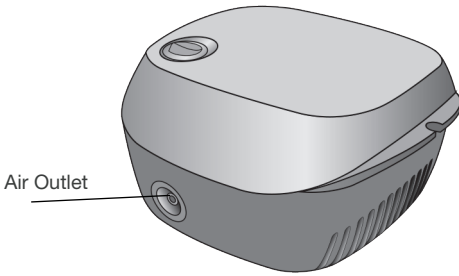


Figure 6-1

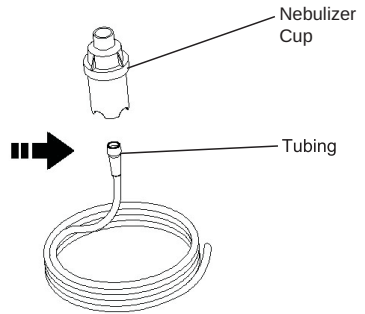


Figure 6-2

11. Plug the power cord into an appropriate electrical outlet. (**DO NOT** use with power strips or extension cords). Make sure at this stage, the power switch is at “OFF” status.
12. Press power switch to “ON” status to begin your prescribed treatment. (**DO NOT** run unattended). When treating children, adult supervision required.
13. When treatment is finished, shut off the unit and unplug it from the electrical outlet.

**⚠ WARNING!**

- The exterior surfaces of the unit and the air outlet connector may become slightly warm to the touch during use. Warm air can also be felt exiting the vents on the sides of the case of the unit. This is normal.
- Never operate if this unit has a damaged cord or plug, has been dropped in any way, immersed into water or if it does not work properly. Return it to a service center for repair.
- If any abnormality occurs, discontinue use immediately until the unit has been examined and repaired.
- Always unplug the product immediately after use.
- Never allow the power supply cord to be pulled, jerked, strained, twisted or severely bent, especially at the plug connections. Damage will occur at the high flex point of entry into the appliance, causing it to rupture and short. Handle the cord carefully for longer life.
- Never block the air openings of the main unit or place it where the air openings may be obstructed.
- Safety overload: **DO NOT** exceed 30 minutes of continuous operation.

# OPERATING THE COMPRESSOR NEBULIZER

1. Take the power cord and plug it into an electrical outlet (Figure 7)

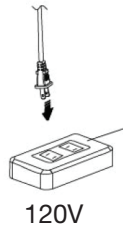
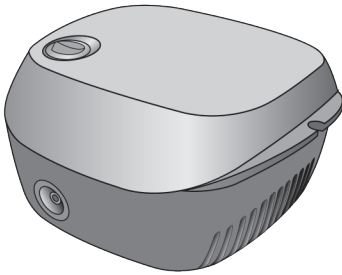
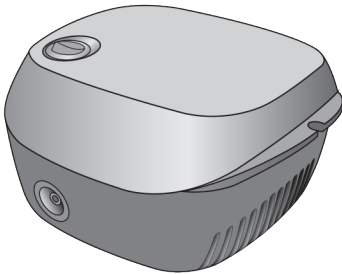


Figure 7

2. Locate the power switch on the top of the unit. Switch it to the "ON" position as shown below (Fig. 8). Power switch will light up when on.

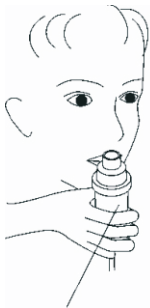


"ON" Position

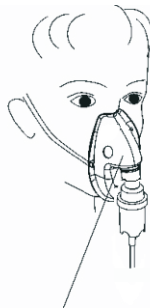


Figure 8

3. Check for moisture leakage near the nebulizer connections.
4. There are (3) ways to administer medication with this nebulizer. Consult with your healthcare provider which option is right for you.
  - (A) Hold the air intake near the nose (Figure 9-1).
  - (B) If using a mask (optional), put the mask on the face (Figure 9-2).
  - (C) If using a mouthpiece, hold it in or near the mouth (Figure 9-3).



Nebulizer Unit  
Figure 9-1



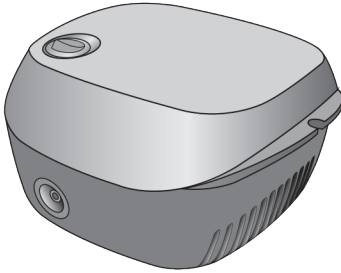
Mask (optional)  
Figure 9-2



Mouthpiece  
Figure 9-3



5. Taking deep breaths in, inhale the liquid medication vapor.
6. When liquid medication is depleted, turn the power switch to “OFF” (Fig. 10).



"OFF" Position



Figure 10

 **CAUTION**

The compressor is designed for intermittent use only.  
For optimal performance, operate the unit for 30 minutes on,  
then leave off for 30 minutes.

7. Unplug the power cord from the electrical outlet.
8. Detach the tubing and accessories from the compressor unit.
9. Clean nebulizer components after use.


## 7. CLEANING

Cleaning and disinfection [instructions] for the compressor accessories (including the Compressor, Nebulizer Cup, mouthpiece, mask and connection tubing.)

### Cleaning the Nebulizer Compressor Accessories After Use

1. Clean the compressor accessories with distilled water.
2. Completely immerse the accessories in 70/30 Isopropyl Alcohol.
3. Soak the accessories in the alcohol for approximately 30 minutes.
4. Wash and rinse the accessories with warm (approximately 122°F/50°C) distilled water.
5. Shake out excess water and dry the accessories with a clean, soft towel or leave the accessories to air-dry.
6. Make sure the accessories and other cleaned parts are completely dry and store in a dry, sealed container.

### Cleaning the Compressor

 **WARNING: DO NOT WASH COMPRESSOR OR ACCESSORIES AS THIS MAY DAMAGE THE COMPONENTS WITH THE EXPECTATION OF THE REUSABLE JET NEBULIZER IN A DISHWASHER.**

1. Wipe compressor daily with damp cloth.
2. Do not use any powdered cleaners or soap pads, which may damage the finish.

### Filter Change

1. Do not use cotton or any other flammable materials near the compressor.
2. Do not wash or clean the filter. Change every 6 months or when filter turns grey, whichever occurs first. Filter Replacement: PB8NEB4FLT
3. Only use filters supplied by your distributor.
4. Do not operate the compressor without a filter.
5. Changing the filter:
  - A. Remove the filter cover.
  - B. Replace the used filter with a new one.
  - C. Replace the filter cover.

## LIMITED WARRANTY

This warranty is solely for the benefit of the original consumer purchaser. This device was built to exacting standards and carefully inspected prior to shipment. Your Roscoe® brand product is warranted to be free of defects in materials and workmanship, has a Limited Warranty of 5 years from date of purchase. If within such warranty period, the product proves defective, the product will be repaired or replaced, at the option of Compass Health Brands. This warranty does not cover device failure due to owner misuse or negligence, or normal wear and tear. The warranty does not extend to nondurable components.

This warranty shall not apply to serial numbered products if the serial number has been removed or defaced, or to defects or damages caused by unauthorized parts, attachments or repairs, negligence, accident, or any circumstance beyond Compass Health Brands' control, such as improper operation, maintenance or storage.

If you have a question about your Compass Health Brands product or this warranty, please contact an authorized Compass Health Brands Dealer.

# **COMPASSHEALTH**

Manufactured for  
Compass Health Brands Corp.  
6753 Engle Rd.  
Middleburg Heights, OH 44130  
[www.compasshealthbrands.com](http://www.compasshealthbrands.com)  
Phone: 800.376.7263  
Made in China  
42-RITE-NEB5\_04 ©2023